
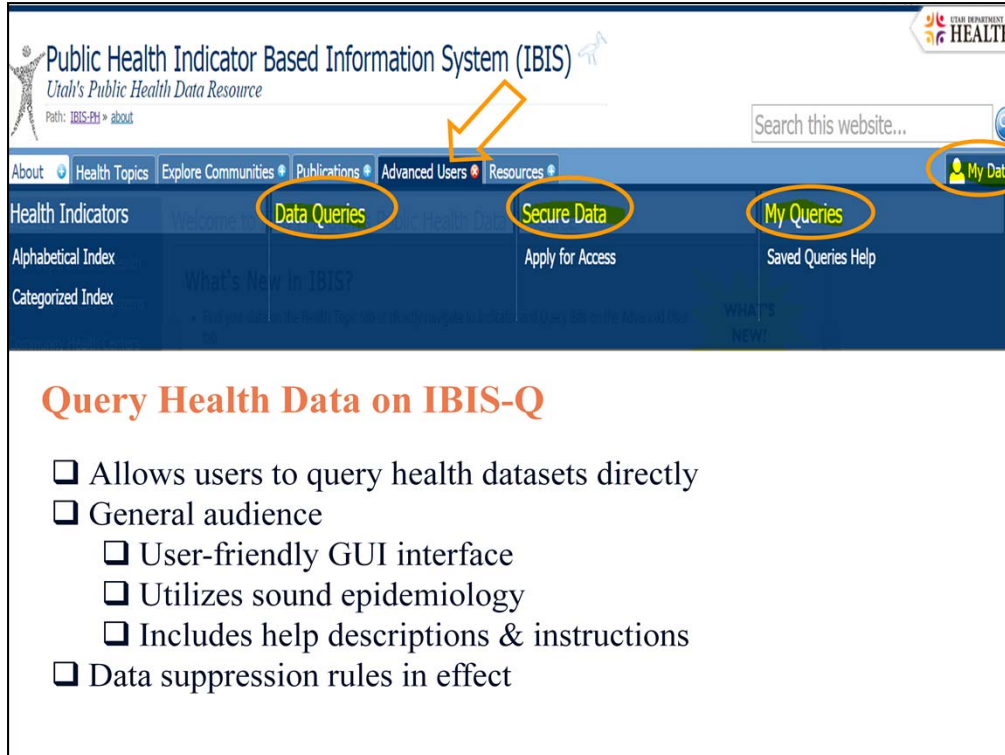
 Public Health Indicator Based Information System (IBIS)  
*Utah's Public Health Data Resource*

 UTAH DEPARTMENT OF HEALTH

# IBIS-PH Query System

Utah's Indicator-Based  
Information System for  
Public Health  
([ibis.health.utah.gov](http://ibis.health.utah.gov))  
February 16, 2017

Only query system



Advanced users are those who know what information they are looking for and what dataset they need to get information from.

\*\*\*\*\*

- The IBIS Query system allows members of the general public to access public health data sets and generate query results based on their specifications.
- The query interface guides users step by step to get the data table result.
- Provide help text to help user to understand how query is defined.
- Suppress small cells to prevent data confidential issues.

\*\*\*\*\*

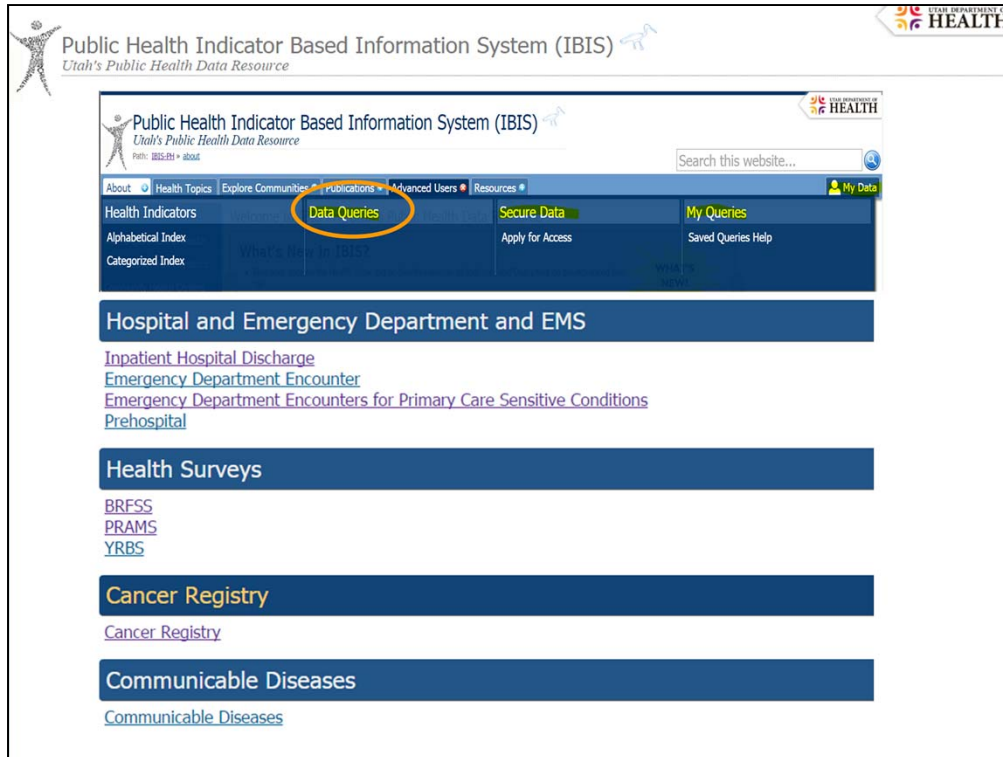
For advanced users, we provide

1. Public data portal - open to general public to access for public health information.
2. Secure data portal - open to users who have been granted the access to certain datasets or specific Local Health Districts.
3. "My Queries" or "My Data" - store two types of information:
  - Secure data modules assigned to users
  - Saved queries users have saved so that users wouldn't need to build the same query again and again.



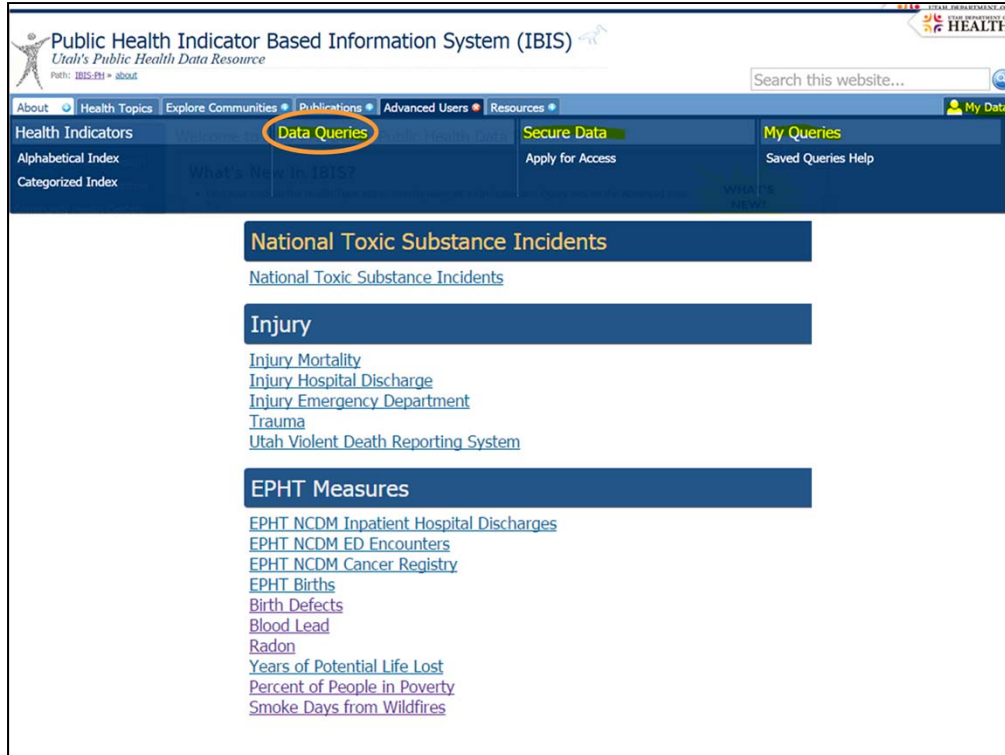
Data Queries:

This page lists what are available on public data query portal:



Data Queries:

This page lists what are available on public data query portal:



## Data Queries:

From this page, Users are allowed to choose a dataset and build customized query on that dataset to get the information they need. Majority of data are updated annually. Also there are some updated monthly or daily.

Public Health Indicator Based Information System (IBIS)  
Utah's Public Health Data Resource

Search this website...

Health Indicators | **Data Queries** | Secure Data | My Queries

Alphabetical Index | What's New in 2015 | Apply for Access | Saved Queries Help

### Query builder – Select a dataset

About | Health Topics | Explore Communities | Publications | Advanced Users | Resources

Introduction  
**Contents and Usage**  
Dataset Queries  
Secure Data  
My Queries  
Tutorials  
Help

#### Dataset Queries

Population Estimates  
[Population Estimates](#)

Birth, Fetal Death and Infant Death  
[Births](#)  
[Fetal Mortality](#)  
[Infant Mortality](#)  
[Birth Defects](#)

Mortality  
**Mortality**  
[Years of Potential Life Lost](#)

Data Queries:

How to build a query from selecting a dataset?

- First, select a dataset

Public Health Indicator Based Information System (IBIS)  
Utah's Public Health Data Resource

Search this website...

Health Topics | Explore Communities | **Data Queries** | Publications | Advanced Users | Resources | My Data

## Query builder – Select a measure

Mortality Query Module Configuration Selection

**Overview**

**Overview**  
Click on either the Quick Selection or Advanced Selection bar to see a list of measures available. Use the hierarchical folder tree to navigate to the query module that will meet your needs. To see folder contents, click on the folder icon. Clicking on the folder again will hide the menu folder contents. When you click on the text link, it will take you to the query module. For further explanation on the modules, click on the "Help" button to the right.

Use Quick selection to select a measure from the Mortality module from 1999 and later, by county and LHD. Use Advanced selection to select data from other years or to select data by Utah Small Area.

\*\*\*\*\*POPULATION DATA ALERT\*\*\*\*\*  
On September 16, 2016, estimates for 2010 and later have been updated to the IBIS Version 2015 population estimates. For more information, go to <http://ibis.health.utah.gov/query/PopEst.html>.

**Quick Selection** (Click here for Utah Counties and Local Health Districts, 1999-present)

- Counts
- Crude Rates
- Age-adjusted Rates (11 age adjustment age groups, 0, 1-4, 5-14, 15-24, 25-34, 35-44, 45-54, 55-64, 65-74, 75-84, 85+)
- Leading Causes of Death by Count
- Leading Causes of Death by Crude Rate
- Leading Causes of Death by Age-adjusted Rates
- Average Age at Time of Death

Data Queries:

Second to select a statistic

Public Health Indicator Based Information System (IBIS)  
Utah's Public Health Data Resource

UTAH DEPARTMENT OF HEALTH

## Query builder – Data use agreement

Query Builder for Mortality ICD-10 Query Module for Utah Counties and Local Health Districts - Count

Overview

### Department of Health IBIS Query System, Data Use Agreement

The data and information provided through the IBIS-PH Query System are intended to support any individuals or entities engaged in activities designed solely to enhance the well-being of a specific community, which may include the State. Activities include informing evidence-based decision making in the State to plan and improve health service delivery, evaluate health care interventions and systems, and inform health policy decisions. Other uses are not permissible.

**As an IBIS-PH Query System user, I AGREE TO:**

1. Use the data for statistical reporting and analysis only.
2. Avoid any attempt to identify or contact individual(s) represented in the IBIS-PH query system data.
3. Avoid disclosure or use of the identity of any individual(s) discovered inadvertently.
4. Avoid linkage of IBIS-PH query system data with other data that, after linkage, might allow identification of an individual represented in the IBIS-PH query system data.
5. Use appropriate safeguards to prevent the inappropriate use or disclosure of individual(s) represented in the data, including when disclosing IBIS-PH Query System data to others.
6. Report IMMEDIATELY any inadvertent or intentional identity disclosures or violations of this agreement of which I become aware to the Director of the Center for Public Health Data, Department of Health.

I understand that failure to adhere to the above stated agreement items will result in loss of access to DOH Internet databases, and I may be subject to legal penalties. Any use, release, or publication of health data contrary to the provisions stated is a class B misdemeanor, with subsequent violations being class A misdemeanors punishable by a fine of up to \$5,000 per offense (Chapter 22, Title 26, Code Annotated). If I am a state government employee, this may be grounds for immediate dismissal.

I Agree

Step 6: How to display the data  
(Grouped By: Year, Chart: None, Map: LHD, 3 Groups)

Submit Reset

Office of Vital Records and Statistics, Center for Health Data and Informatics, Utah Department of Health, Salt Lake City, UT 84143-1012, Telephone: 801-538-6900

## Data Queries:

A Data Use Agreement will pop up the first time a user selects a module. Users must agree to use the data for statistical reporting and analysis only, avoiding any attempt to identify individuals represented in the data.



Public Health Indicator Based Information System (IBIS)  
Utah's Public Health Data Resource

UTAH DEPARTMENT OF HEALTH

## Query builder— Select parameters to built a query

Query Builder for Mortality ICD-10 Query Module for Utah Counties and Local Health Districts - Count

**Overview**

The mortality data in this IBIS-Q query module have been derived from death certificates in participation with the National Vital Statistics System, and are maintained and provided by the Utah Department of Health, Office of Vital Records. They include virtually all deaths of Utah residents, regardless of where the death occurred. The causes of death were coded using International Classification of Diseases (ICD) codes. The population estimates for years 1980-1999 were produced by the Utah Governor's Office of Planning and Budget (GOPB). For years 2000 and later the population estimates are provided by the National Center for Health Statistics (NCHS) through a collaborative agreement with the U.S. Census Bureau.

**Getting Started**

Follow the steps to narrow your query and display your results. When you are done forming your query, click "Submit" bottom of the screen (last step) to get your query result.

\*\*\*\*\*POPULATION DATA ALERT!\*\*\*\*\*  
On September 16, 2016, estimates for 2010 and later have been updated to the IBIS Version 2015 population estimates. For more information, go to <http://ibis.health.utah.gov/query/PopEst.html>.

**Step 1: Select year**  
(2015)

What year grouping do you want to select. Default is single years, most recent year.

Single years

2011  
2012  
2013  
2014  
2015

Enter custom year group(s)

**Step 2: Select cause of death**

**Step 3: Select age of decedent**

**Step 4: Select sex**

**Step 5: Select geographic area**

**Step 6: How to display the data**  
(Grouped By: Year, Chart: None, Map: LHD, 3 Groups)

Submit Reset

Office of Vital Records and Statistics, Center for Health Data and Information, Utah Department of Health, 260 Lake City, UT 84143-1603, Telephone: 801-538-6043, WebSite: <http://ibis.health.utah.gov>

Data Queries:

Third to build a query fitting your need step by step:

This page allows users to

- select specific filters
- limit the data within the range you selected
- display result by up to two variables
- Display result by chart or map

Public Health Indicator Based Information System (IBIS)  
Utah's Public Health Data Resource

UTAH DEPARTMENT OF HEALTH

## Query Builder – Choose how to display data and map/chart

**Step 6: How to display the data**  
(Grouped By: Geographic Area, Chart: None, Map: LHD, 3 Groups)

To display a map, you must select Geographic Area in Display By (category) and None in Group By (series)

Display By (category)	Geographic Area
Group By (series)	None
Chart	None
Map	None

Submit Reset

Office of Vital Records and Statistics, Center for Health Data and Informatics, Utah Department of Health  
Website: <http://health.utah.gov/vitalrecords> Lake City, UT 84114  
utah.gov

Data Queries:

“How to display data” step:

- Choose how to display data result up to two variables
- Choose how to display data result by map and chart
- Please note: to display map user must select “Geographic Area” in category by and “None” in series by...

Public Health Indicator Based Information System (IBIS)  
Utah's Public Health Data Resource

UTAH DEPARTMENT OF HEALTH

Query Results for Mortality ICD-10 Query Module for Utah Counties and Local Health Districts - Count

Query Criteria

Single Years Filter: 2015  
Data Grouped By: Local Health District

Data Table

Local Health District	Number of Deaths
Bear River LHD	891
Central Utah LHD	579
Davis County LHD	1,734
Salt Lake County LHD	6,480
San Juan, LHD (2015 and after)	102
Southeast Utah LHD (2014 and before)	0
Southeast Utah LHD (2015 and after)	392
Southwest Utah LHD	1,713
Summit County LHD	144
Tooele County LHD	351
TriCounty LHD	410
Utah County LHD	2,486
Wasatch County LHD	127
Weber-Morgan LHD	1,854
Outside US	0
Outside Utah	0
Unknown	0
Overall	17,263

Data Queries:

Result page shows:

- Filter criteria. How data has been subset for users query definition.
- Data table

Public Health Indicator Based Information System (IBIS)  
Utah's Public Health Data Resource

UTAH DEPARTMENT OF HEALTH

## Query result

- Metadata
- Export to Excel
- Chart options

Query Results for Mortality ICD-10 Query Module for Utah Counties and Local Health Districts - Count

Query Criteria	Single Years Filter:	Data Grouped By:
	2015	Local Health District

Map

Data Table

Data Notes

Data Sources

Data Issues

Query Date Time Stamp

These data were queried on: Wed, 15 Feb 2017 10:31:31 MST  
The dataset was last updated on: Mon, 12 Dec 2016 11:26:26 MST

Data Queries:

A few nice features shown on the query result page:

- Metadata
- Export to Excel
- Chart option

Public Health Indicator Based Information System (IBIS)  
Utah's Public Health Data Resource

UTAH DEPARTMENT OF HEALTH

## Query result - Metadata

TinCounty LHD	410
Utah County LHD	2,486
Wasatch County LHD	127
Weber-Morgan LHD	1,854
Outside US	0
Outside Utah	0
Unknown	0
Overall	17,263

**Data Notes**

ICD Stands for International Classification of Diseases. It is a coding system maintained by the World Health Organization and the U.S. National Center for Health Statistics used to classify causes of death on death certificates and diagnoses, injury causes, and medical procedures for hospital and emergency department visits. These codes are updated every decade or so to account for advances in medical technology. The U.S. is currently using the 10th revision (ICD-10) to code causes of death. The 9th revision (ICD-9) is still used for hospital and emergency department visits.

**Data Sources**

- Utah Death Certificate Database, Office of Vital Records and Statistics, Utah Department of Health. Utah Population Estimates Committee (UPEC) and the Governor's Office of Planning and Budget (GOPB) for years 1980-1999. For years 2000 and later the population estimates are provided by the National Center for Health Statistics (NCHS) through a collaborative agreement with the U.S. Census Bureau, IBIS Version 2015.

**Data Issues**

Death certificates in Utah are required to be filed by funeral directors. Funeral directors obtain demographic information from an informant, a close family member of the decedent. The cause of death is certified by the decedent's physician or the physician that attended the death. Accidental and suspicious deaths are certified by the Medical Examiner. Death certificate data go through extensive edits for completeness and consistency. The Office of Vital Records and Statistics (OVRs) does annual trainings for funeral directors and local registrars.

When death certificates are received the cause of death literals are keyed into software locally by Office of Vital Records and Statistics (OVRs), then shipped to NCHS where they are machine coded into ICD-10 codes. NCHS returns the ICD-10 codes to OVRs where the death records are updated. On August 13, 2013 the 2010 and 2011 cause of death data have been updated using the NCHS Revised Causes of Death Mortality data set.

For rates where the count is zero, a numerator of "3" was used to calculate the confidenceinterval (per Lillienfeld and Stolley, Foundations of Epidemiology, 1994).

**Query Date Time Stamp**

These data were queried on: Tue, 14 Feb 2017 11:33:31 MST

Data Queries:

A few nice features shown on the query result page:

1. Query metadata: data notes, data sources, data issues, and query date and time.

Public Health Indicator Based Information System (IBIS)  
Utah's Public Health Data Resource

UTAH DEPARTMENT OF HEALTH

## Query result - Output to Excel

About • Health Topics • Explore Communities • Publications • Advanced Users • Resources • My Data

Modify Query Definition • Query Results for Mortality ICD-10 Query Module for Utah Counties and Local Health Districts - Count

Chart Options • Query Criteria

Select Different Measure • Single Years Filter: 2015

Reset Query Definition • Data Grouped By: Local Health District

Save Query Definition • Map

My Saved Query Definitions List • Data Table

Output to Excel

View Query Definition XML

Local Health District	Number of Deaths
Bear River LHD	891
Central Utah LHD	579

Save As

Computer > Local Disk (C:)

Organize • New folder

Name	Date modified	Type	Size
\$RECYCLEBIN	6/23/2014 2:03 PM	File folder	
apache-tomcat-8.0.9	6/23/2016 10:13 AM	File folder	
b68c86e96b45b493591ac4526a1e83	5/1/2014 9:27 AM	File folder	
backend_qModules10-17-16	10/17/2016 3:02 PM	File folder	
Boot	11/1/2016 7:55 AM	File folder	
Config.Msi	1/21/2017 7:46 AM	File folder	
Documents and Settings	7/13/2009 11:08 PM	File folder	
drivers	12/3/2013 2:31 PM	File folder	
F Drive	5/23/2016 8:41 AM	File folder	
IBIS_CoP_Conference_Calls	2/15/2017 9:44 AM	File folder	
Local Disk (C:)	6/11/2014 6:33 AM	File folder	

File name: Count.xls

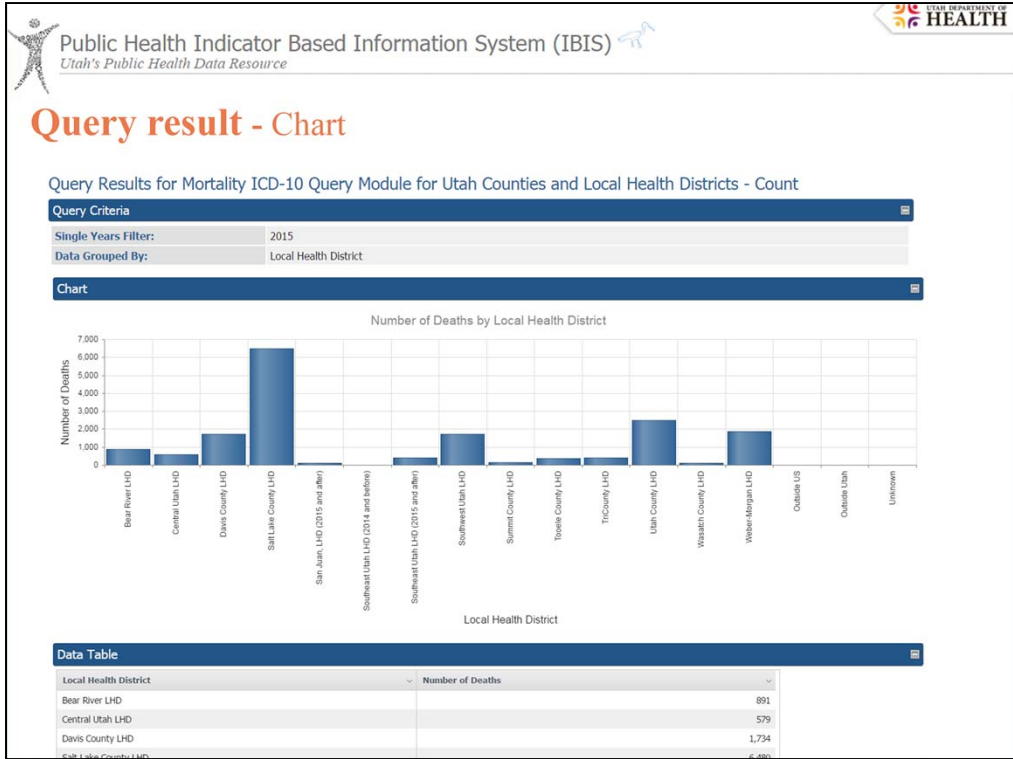
Save as type: Microsoft Excel 2007-2009 Worksheet

Save Cancel

Data Queries:

A few nice features shown on the query result page:

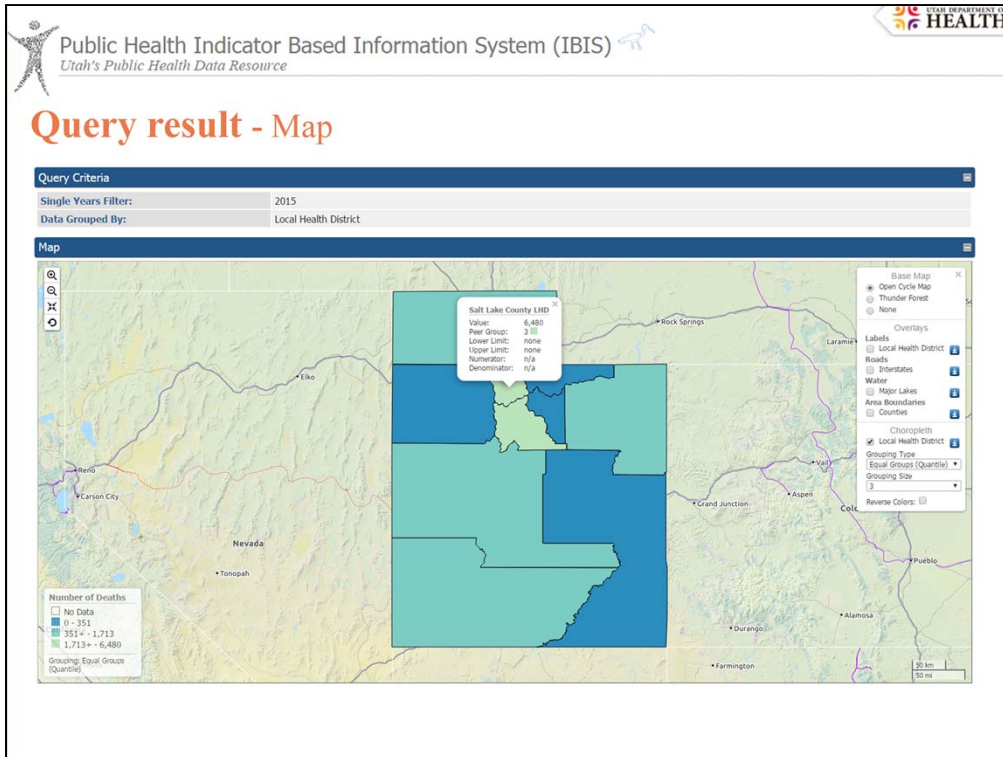
1. Data output to Excel: directly saved in Excel in user selected file folder



Data Queries:

A few nice features shown on the query result page:

Display result by selected chart type.

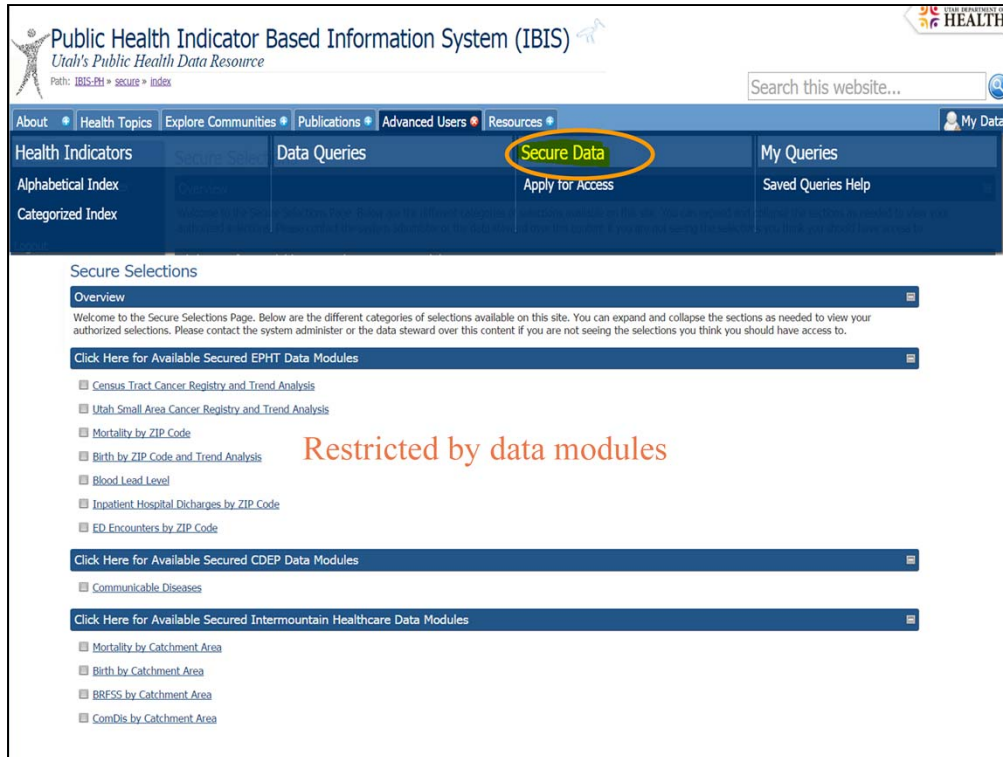


Data Queries:

A few nice features shown on the query result page:

Display result by map





## Secure Data


### Secure data portal includes

- data with more refined geographic areas, such as data by zipcodes and census tracts or
- time sensitive data such as hospital discharge data by date.


Once a user has been granted access to the secure modules, after logging in, a list of the modules would be displayed. From this page, user would follow the same steps as those in the public query portal from selecting a dataset.

There are two restrictions for secure data portal:

1. Restricted by data modules



Public Health Indicator Based Information System (IBIS)  
Utah's Public Health Data Resource




---

Query Builder for Mortality ICD-10 Query Module for Authorized Local Health District (s) by ZIPs - Count

**Overview**

**Overview**  
The mortality data in this IBIS-Q query module have been derived from death certificates in participation with the National Vital Statistics System, and are maintained and provided by the Utah Department of Health, Office of Vital Records. They include virtually all deaths of Utah residents, regardless of where the death occurred. The causes of death were coded using International Classification of Diseases (ICD) codes.

**Getting Started**  
Follow the steps to narrow your query and display your results. When you are done forming your query, click "Submit" bottom of the screen (last step) to get your query result.

**Step 1: Select year**  
(2015)

**Step 2: Select cause of death**

**Step 3: Select age of decedent**

**Step 4: Select sex**

**Step 5: Select geographic area**  
(Bear River LHD, Central Utah LHD, Davis County LHD, Salt Lake County LHD, Southeast Utah LHD, Southwest Utah LHD, Summit County LHD, Tooele County LHD, TriCounty LHD, Utah County LHD, Wasatch County LHD, Weber-Morgan LHD)

Show Selection Map

**First choose a geography type. Default is all Utah residents, regardless of place of hospitalization.**

- Local health district
  - Bear River LHD
  - Central Utah LHD
  - Davis County LHD
  - Salt Lake County LHD
  - Southeast Utah LHD
  - Southwest Utah LHD
- Zipcodes

Restricted by Local Health Districts

## Secure Data

There are two restrictions for secure data portal:

### 2. Restricted by Local Health Districts

## “My Queries” and “My Data”

“My Queries” and “My Data” store

1. Secure data modules assigned to the user
2. Saved queries so that the user wouldn't need to build the query with the same definition again and again.

Public Health Indicator Based Information System (IBIS)  
Utah's Public Health Data Resource

UTAH DEPARTMENT OF HEALTH

### New Saved Query Criteria Definition

**What Was Selected**

Dataset Title:	Mortality ICD-10 Query Module for Utah Counties and Local Health Districts - Count
Dataset Path:	mort/MortCntyICD10/Count
Single Years Filter:	2015
User Defined Cause of Death Filter:	I26-I28, I34-I38, I42-I49, I51
Age Adjustment Age Groups Filter:	45-54 years
Sex Filter:	Female
Local Health District Filter:	Davis County LHD, Salt Lake County LHD, Utah County LHD, Weber-Morgan LHD
Data Grouped By:	Year, Causes of Death
Chart Name:	None
Map Name:	LHD_3GRPS_QUANT
Measure:	

Saved!

**Saved Query Name and Title**

\* Name:

\* Title:

Description:

Keep Private:

\* = Required Input

“My Queries” and “My Data”

Saved query saves all filters a user put in a query.

Public Health Indicator Based Information System (IBIS)  
Utah's Public Health Data Resource

Path: IBIS-FH > datasets > selection > definition

Search this website...

About Health Topics Explore Communities Publications Advanced Users Resources My Data

Modify Query Definition Query Results for Mortality ICD-10 Query Module for Utah Counties and Local Health Dist

Chart Options Query Criteria

Single Years Filter:	2015
User Defined Cause of Death Filter:	I26-I28, I34-I38, I42-I49, I51
Age Adjustment Age Groups Filter:	45-54 years
Sex Filter:	Female
Local Health District Filter:	Davis County LHD, Salt Lake County LHD, Utah County LHD, Weber-Morgan LHD
Data Grouped By:	Single Years, User Defined Cause of Death

Welcome Tong Zheng  
You are logged in as:  
tzheng@utah.gov  
Click [logout](#) if you want to logoff or switch to another user account.

- [My Data Introduction](#)
- [My Data Selections](#)
- [Logout](#)

My Selections

Welcome Tong Zheng. This page shows your saved dataset queries. You can navigate to any queryable secure datasets that you have access to, as well as navigation links to all of your user options.

It appears that this account is a secure user account. If you want to access your log in using your self registered account please [logout](#) and log back in using the self registered user login mechanism.

- [Birth Query Module for Utah Counties and Local Health Districts-Count](#)
- [Mortality ICD-10 Query Module for Authorized Local Health District \(s\) by ZIPs - Count](#)
- [Mortality ICD-10 Query Module for Utah Counties and Local Health Districts - Count](#)
- [Mortality ICD-10 Trend Analysis Query Module for Utah Counties and Local Health Districts - Crude Rates, Deaths Per 100,000 Population](#)
- [Utah Cancer Registry Query Module for Authorized Local Health District \(s\) by Small Areas-Count of Incident Cancer](#)
- [Utah Cancer Registry Query Module for Authorized Local Health District \(s\) by Small Areas-Count of Incident Cancer](#)
- [Utah Communicable Disease Query Module-Number of Cases](#)
- [test delete](#)

“My Queries” and “My Data”

Next time the user only needs to click the saved query link to get query run on the same criteria.

Public Health Indicator Based Information System (IBIS)  
Utah's Public Health Data Resource

UTAH DEPARTMENT OF HEALTH

About Health Topics Explore Communities Publications Advanced Users Resources My Data

Modify Query Definition Query Results for Mortality ICD-10 Query Module for Utah Counties and Local Health Districts - Count

Chart Options Query Criteria

Select Different Measure

Reset Query Definition

Save Query Definition

My Saved Query Definitions List

Output to Excel

View Query Definition XML

Single Years Filter: 2015

User Defined Cause of Death Filter: I26-I28, I34-I38, I42-I49, I51

Age Adjustment Age Groups Filter: 45-54 years

Sex Filter: Female

Local Health District Filter: Davis County LHD, Salt Lake County LHD, Utah County LHD, Weber-Morgan LHD

Data Grouped By: Single Years, User Defined Cause of Death

Data Table

User Defined Cause of Death	Single Years	Number of Deaths
126-128	2015	5*
134-138	2015	**
142-149	2015	**
151	2015	**
Overall	Overall	12

## “My Queries” and “My Data”

The user gets exactly same query result as last time. If the user needs to update the query criteria, the query filter or definition can be modified and save as a new **SAVED** query.